



Financial Markets

**Reporting for periods ending
February 2011**



Providing Strategic Financial Advice

Sharemarkets, fixed interest and currency

Sharemarket and fixed income scoreboard for period ending February 2011						
	Month return	Quarter return	Financial year return	1 year return	5 years return	10 years return
S&P 500 in \$US	3.4%	13.0%	30.5%	22.6%	2.9%	2.6%
S&P 500 in \$A	1.3%	6.4%	8.3%	7.8%	-3.4%	-4.0%
NASDAQ in \$US	3.0%	11.4%	31.9%	24.3%	4.0%	2.6%
NASDAQ in \$A	0.9%	4.9%	9.4%	9.3%	-2.3%	-4.0%
FTSE 100 Accumulation Index in GBP	2.6%	9.0%	24.1%	15.5%	4.5%	3.6%
FTSE 100 Accumulation Index in \$A	2.0%	7.2%	11.9%	8.5%	-3.3%	-1.8%
MSCI AC ASIA EX JAPAN Accumulation Index in Local Currency	-3.7%	-1.0%	13.4%	16.7%	9.9%	
MSCI AC ASIA EX JAPAN Accumulation Index in A\$	-5.9%	-5.4%	-1.9%	6.0%	3.5%	
MSCI AC World Ex Australia Accumulation Index in Local currencies	2.4%	9.7%	23.5%	18.1%	2.0%	2.9%
MSCI AC World Ex Australia Accumulation Index in \$A	0.7%	5.7%	7.8%	7.4%	-2.6%	-2.1%
MSCI Emerging Markets Accumulation Index in Local Currency	-1.4%	0.9%	15.3%	15.7%	9.2%	13.9%
MSCI Emerging Markets Accumulation Index in \$A	-3.0%	-2.7%	1.5%	6.6%	3.2%	7.9%
MSCI EUROPE Accumulation Index in Local Currency	2.1%	9.8%	19.2%	14.8%	0.8%	1.5%
MSCI EUROPE Accumulation Index in \$A	1.1%	9.6%	11.1%	6.3%	-3.3%	-1.8%
MSCI JAPAN Accumulation Index in Yen	4.6%	10.2%	15.0%	8.1%	-8.9%	-1.5%
MSCI JAPAN Accumulation Index in \$A	2.4%	6.1%	3.0%	3.1%	-8.3%	-4.5%
MSCI World ex Aust Accum Index in Local Currencies	3.0%	11.1%	24.9%	18.5%	1.3%	2.2%
MSCI World Ex Australia Accumulation Index in \$A	1.3%	7.1%	8.9%	7.6%	-3.2%	-2.8%
S&P/ASX 200 Accumulation Index	2.3%	6.3%	15.6%	8.7%	4.0%	8.2%
S&P/ASX 200 Property Accumulation Index	3.2%	7.0%	8.4%	6.8%	-8.9%	
FTSE EPRA/NAREIT Developed - Total Return in Local Currencies	2.1%	4.5%	16.3%	27.7%	-1.0%	
FTSE EPRA/NAREIT Global EX Aust - Total Return in \$A	0.5%	4.1%	8.7%	14.3%		
UBSWA Composite Bond Index	0.4%	1.4%	2.4%	5.5%	5.9%	5.8%
SBWGB Accumulation Index currency hedged \$A	0.3%	0.2%	2.3%	6.3%	7.2%	7.5%

Australian interest rates and currency

	28 February 2011	30 November 2010	30 June 2010	28 February 2010	28 February 2006	28 February 2001
RBA cash rate target	4.75	4.75	4.50	3.75	5.50	5.75
Australian 90 day bank bill yield (%)	4.96	5.02	4.89	4.14	5.61	5.47
Australian 10 year bond yield (%)	5.51	5.46	5.16	5.52	5.31	5.29
Australian dollar (in euros)	0.74	0.73	0.70	0.66	0.62	
Australian dollar (in Japanese yen)	83.00	80.88	75.46	79.42	85.91	61.09
Australian dollar (in US cents)	101.63	96.18	85.23	88.99	73.82	52.50

Source: Datastream

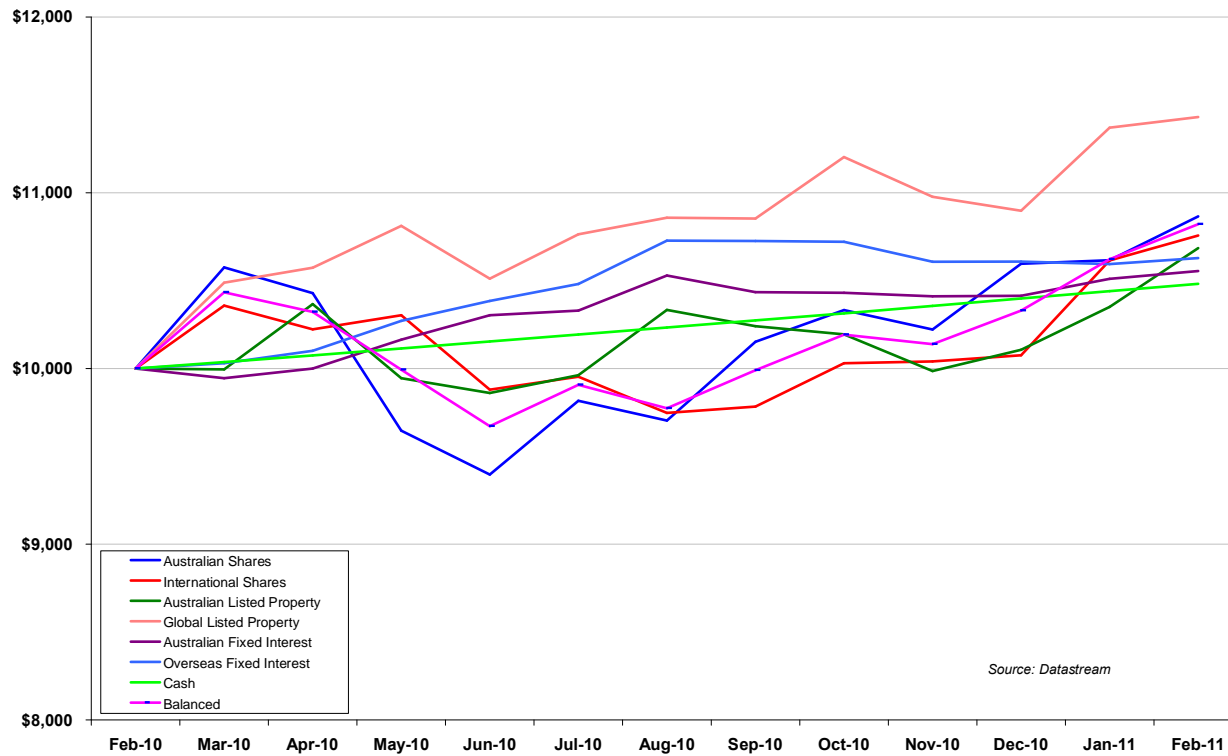


Providing Strategic Financial Advice

Market returns ó 12 months

Asset Class Performance over 12 months to February 2011

(based on investment of \$10,000)

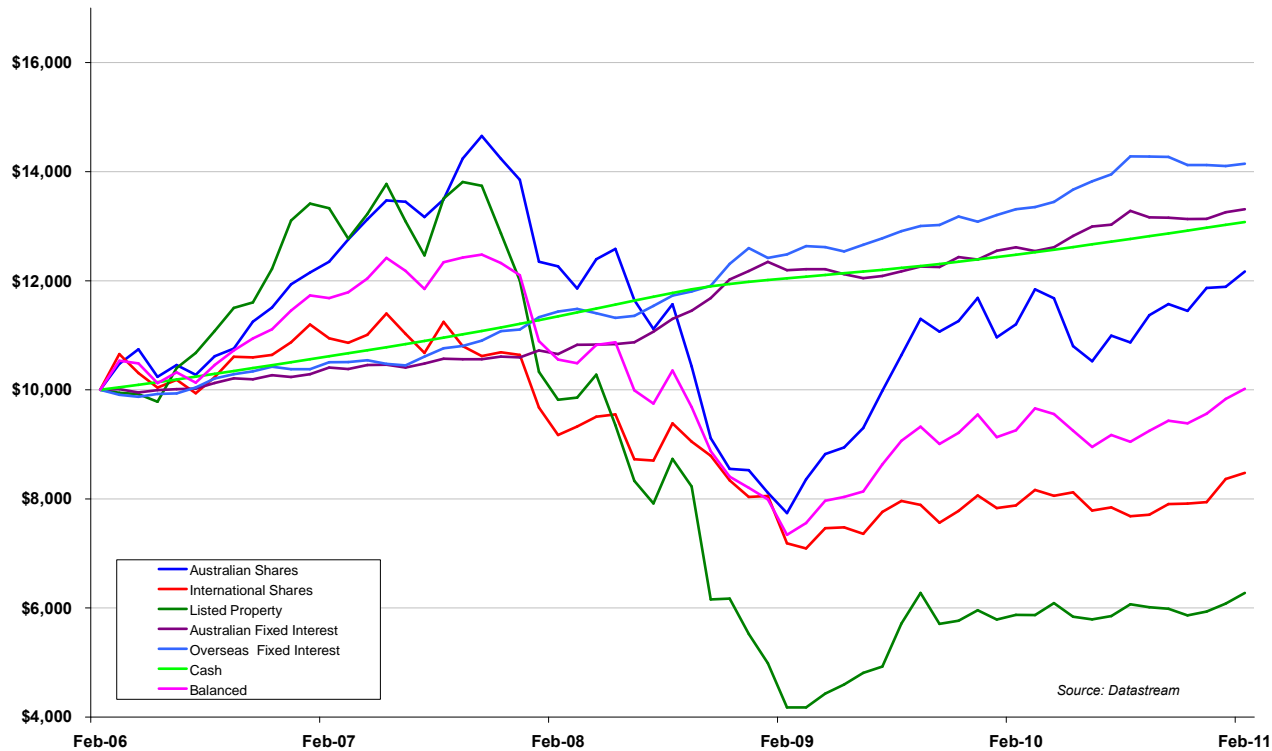


Providing Strategic Financial Advice

Market returns ó five years

Asset Class Performance over 5 years to February 2011

(based on investment of \$10,000)

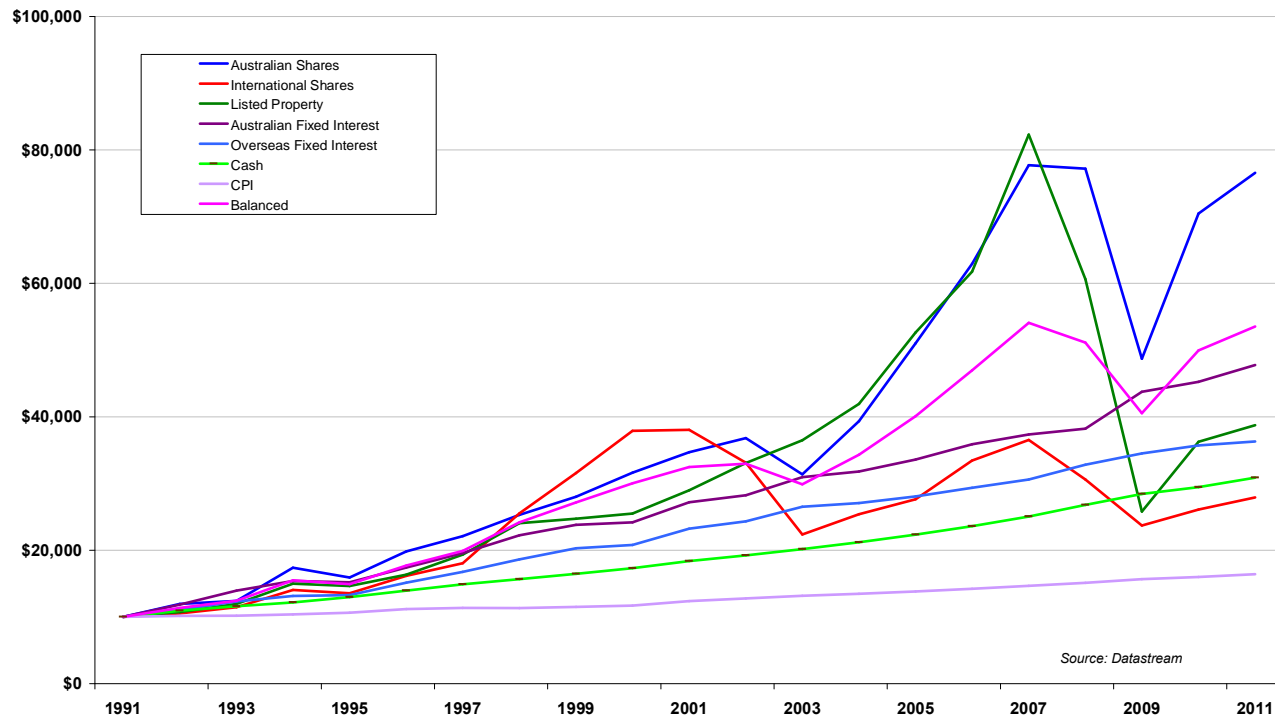


Providing Strategic Financial Advice

Market returns ó 20 years

Asset Class Performance over 20 years to February 2011

(based on investment of \$10,000)



Providing Strategic Financial Advice

Australian sharemarket sector returns

Australian sharemarket sector returns for the 12 months ending February							
	2011	2010	2009	2008	2007	2006	2005
Energy	15%	23%	-18%	26%	12%	51%	53%
Materials	21%	45%	-44%	43%	17%	32%	44%
Industrials	3%	71%	-56%	-10%	27%	13%	42%
Consumer Discretionary	0%	65%	-54%	-14%	28%	4%	16%
Consumer Staples	8%	30%	-20%	4%	37%	12%	31%
Healthcare	4%	2%	-3%	14%	23%	43%	37%
Information Technology	-10%	72%	-15%	-17%	41%	19%	35%
Telecommunication Services	2%	-4%	-25%	16%	19%	-15%	17%
Utilities	5%	21%	-28%	-19%	28%	38%	33%
Property Trusts	7%	41%	-57%	-26%	33%	17%	26%
Financials (ex Property Trusts)	2%	66%	-32%	-20%	22%	29%	24%
S&P/ASX 200 Accumulation Index	9%	45%	-37%	-1%	23%	23%	30%

Notes:

The benchmark index used in this table is the S&P/ASX 200 Accumulation Index.

The returns are total returns.

Source: Datastream



Providing Strategic Financial Advice

Overseas sharemarket sector returns

World sharemarket sector returns for the 12 months ending February										
<i>Unhedged in Australian dollars</i>	2011	2010	2009	2008	2007	2006	2005	2004	2003	2002
Total Market	8%	16%	-25%	-11%	11%	26%	12%	18%	-30%	-12%
Oil & Gas	16%	7%	-23%	11%	4%	38%	39%	16%	-19%	2%
Basic Materials	16%	44%	-43%	21%	23%	29%	26%	28%	-24%	-1%
Industrials	14%	23%	-32%	-9%	12%	30%	15%	24%	-35%	-13%
Consumer Goods	9%	12%	-15%	-8%	13%	26%	10%	17%	-24%	-9%
Health Care	-5%	1%	6%	-17%	4%	19%	5%	5%	-28%	-2%
Consumer Services	9%	10%	-12%	-22%	11%	15%	9%	17%	-34%	-8%
Telecom	7%	-10%	-9%	-2%	27%	9%	9%	17%	-29%	-32%
Utilities	-3%	-7%	-13%	-2%	21%	34%	25%	14%	-24%	-16%
Financials	3%	32%	-42%	-24%	11%	31%	12%	24%	-27%	-11%
Technology	8%	23%	-16%	-16%	1%	23%	-6%	24%	-42%	-27%

Notes:

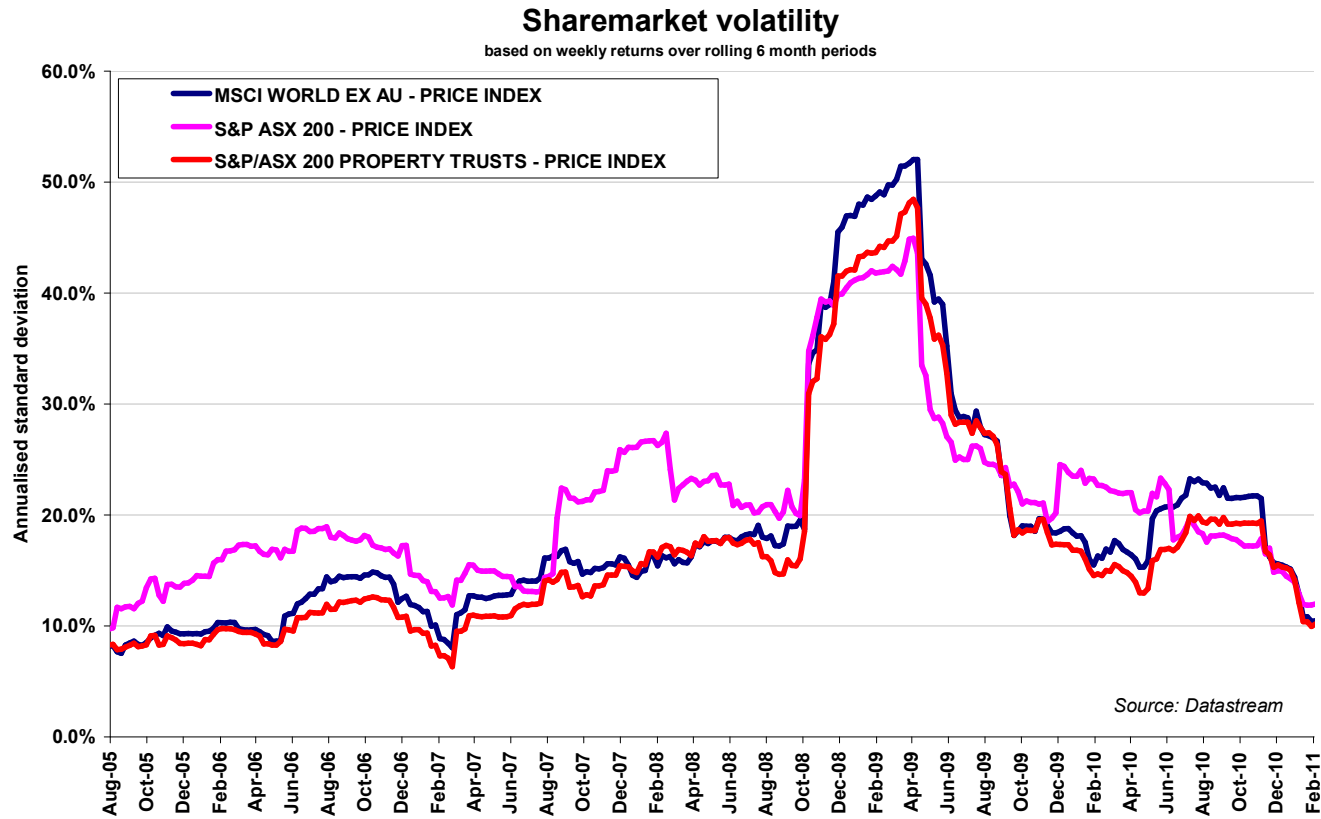
The benchmark index used in this table is a Datastream calculated index.
The returns are total returns.

Source: Datastream



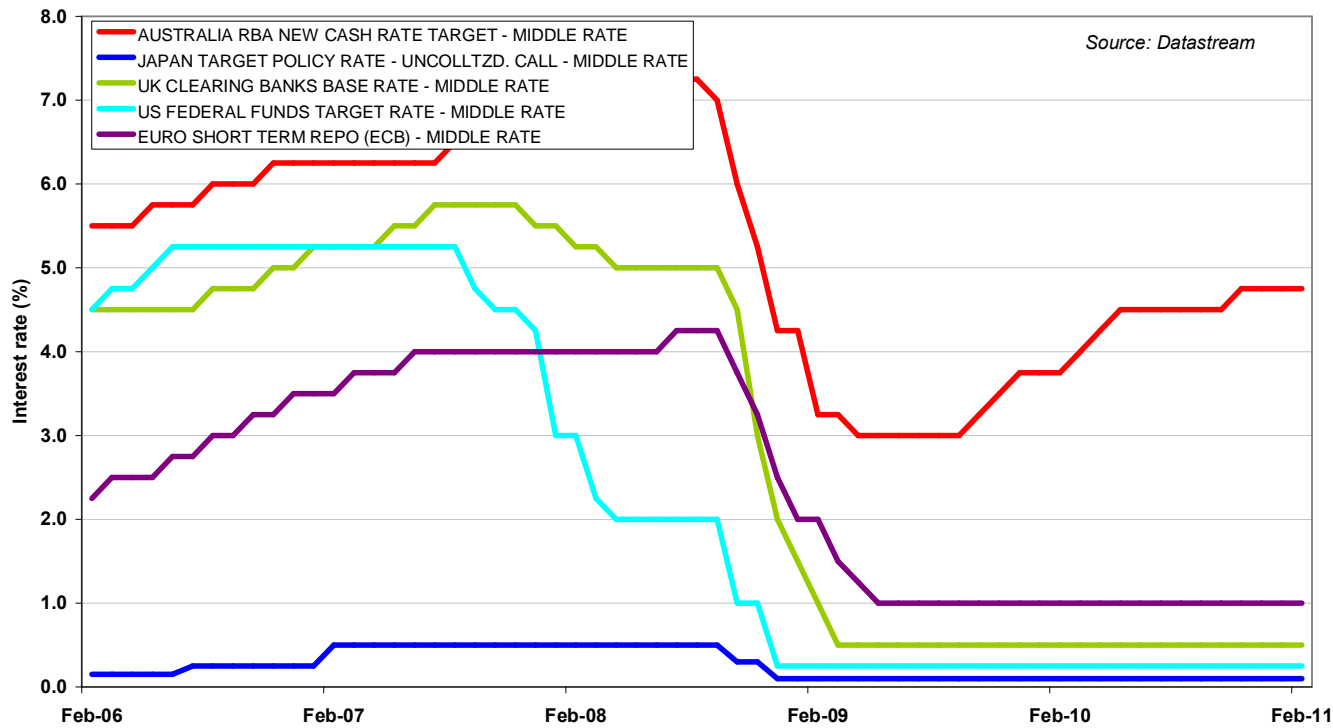
Providing Strategic Financial Advice

Sharemarket volatility



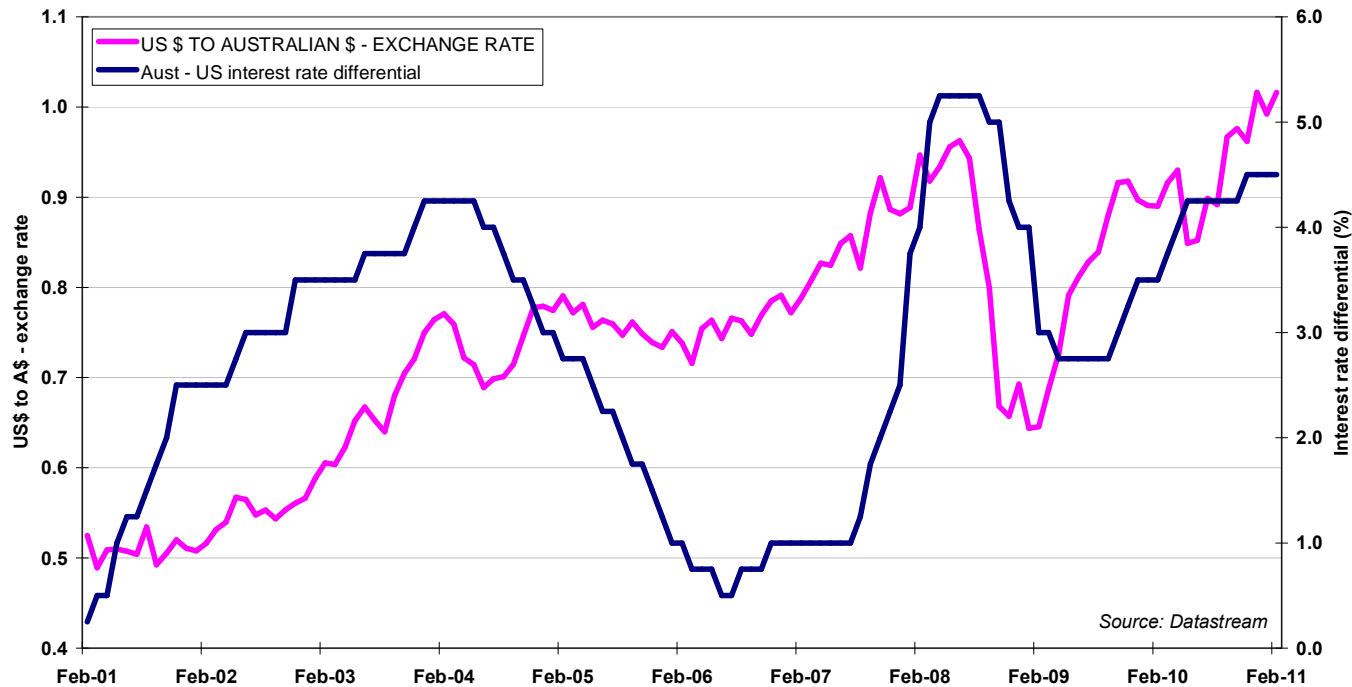
Global interest rates

Global interest rates for the five years ending Feb 2011



Currency movements and interest rate differentials

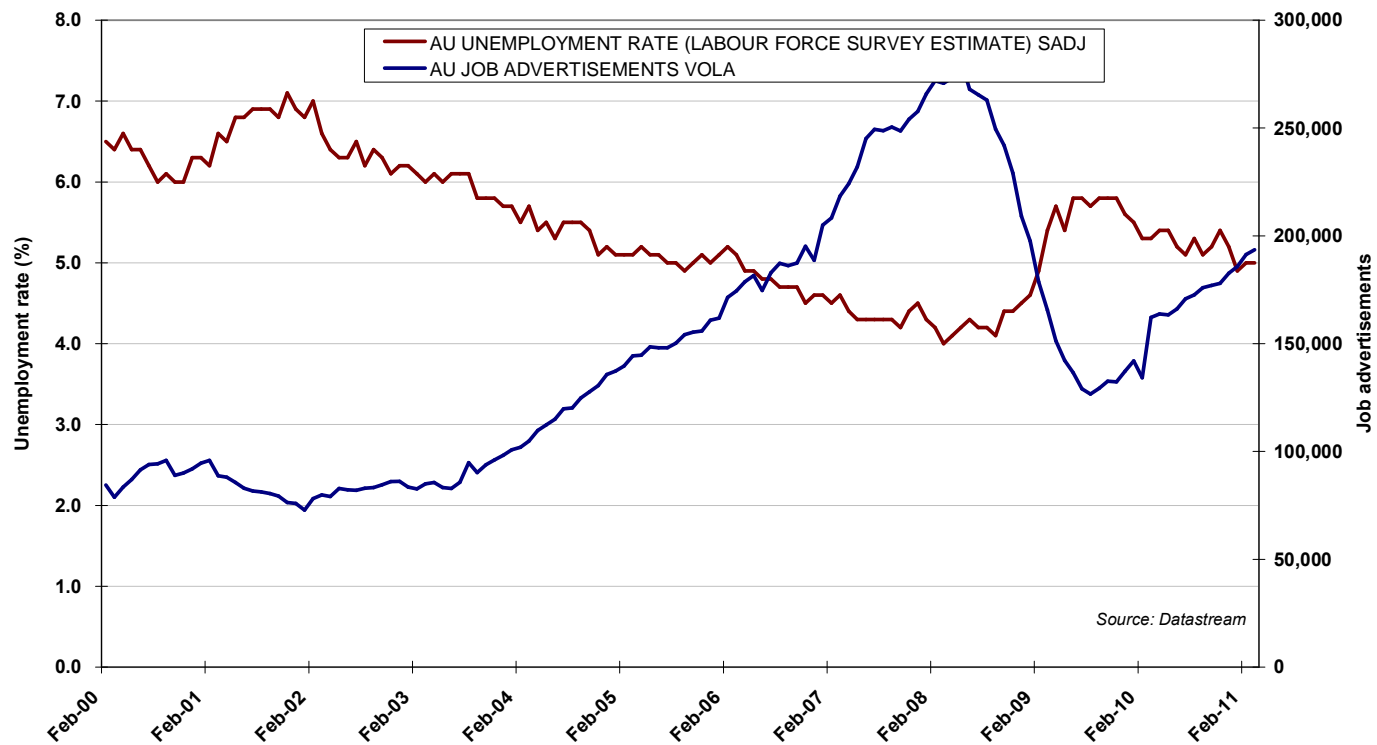
Currency movements and interest rate differentials for Australia and the US for the 10 years ending Feb 2011



Providing Strategic Financial Advice

Unemployment and job advertisements

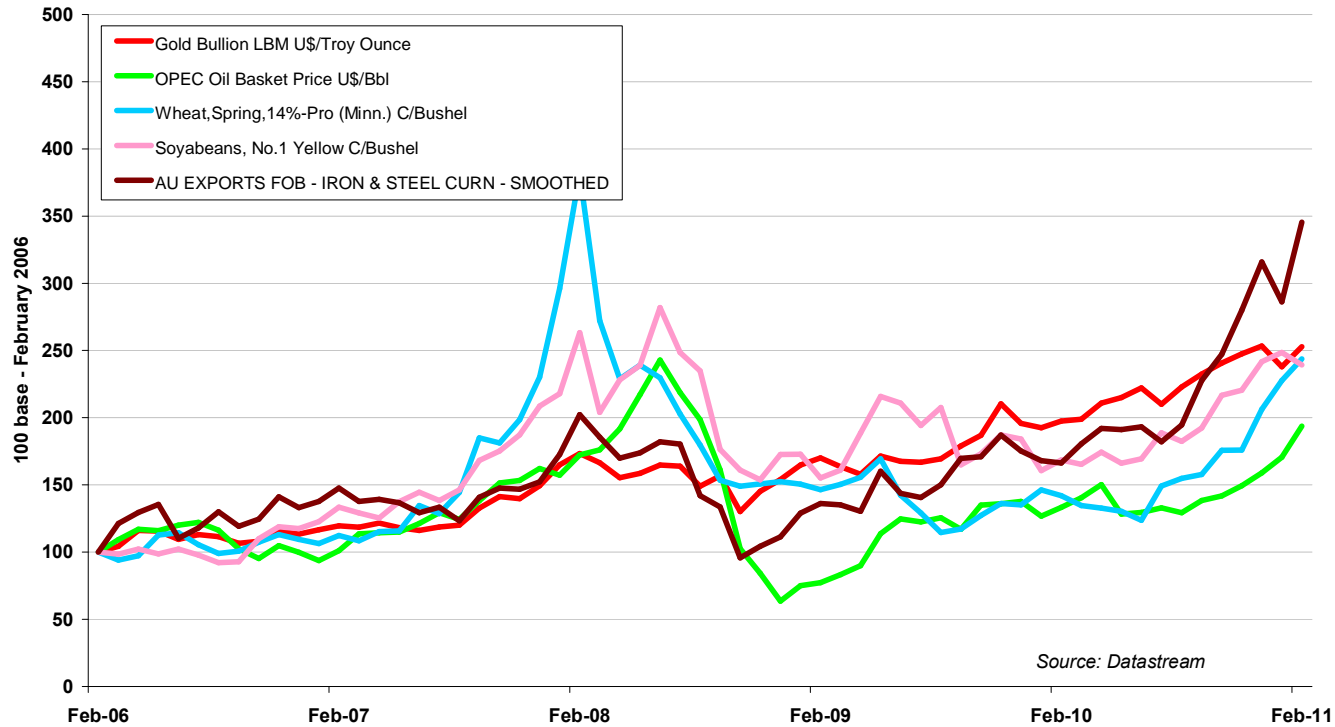
Australian unemployment rate and job advertisements to February 2011



Providing Strategic Financial Advice

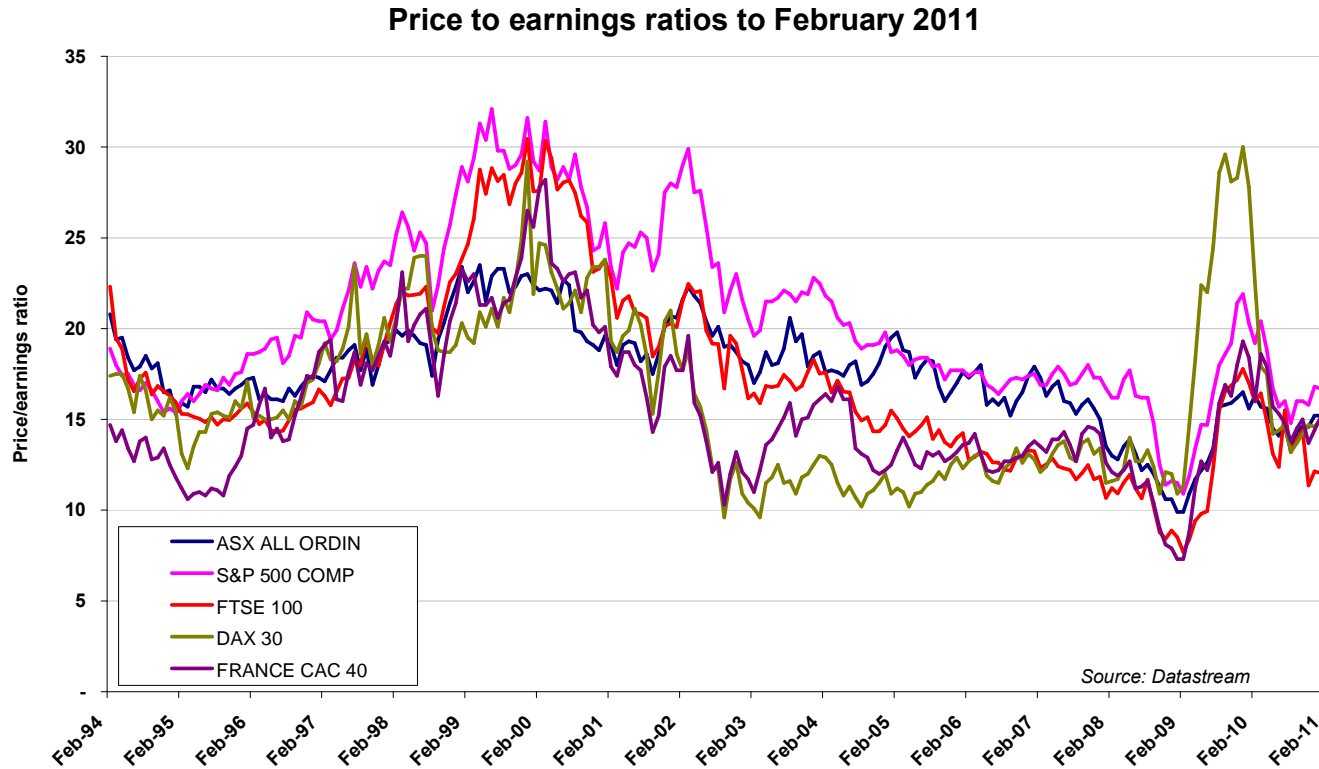
Commodity indices

Commodity indices for the five years to February 2011



Providing Strategic Financial Advice

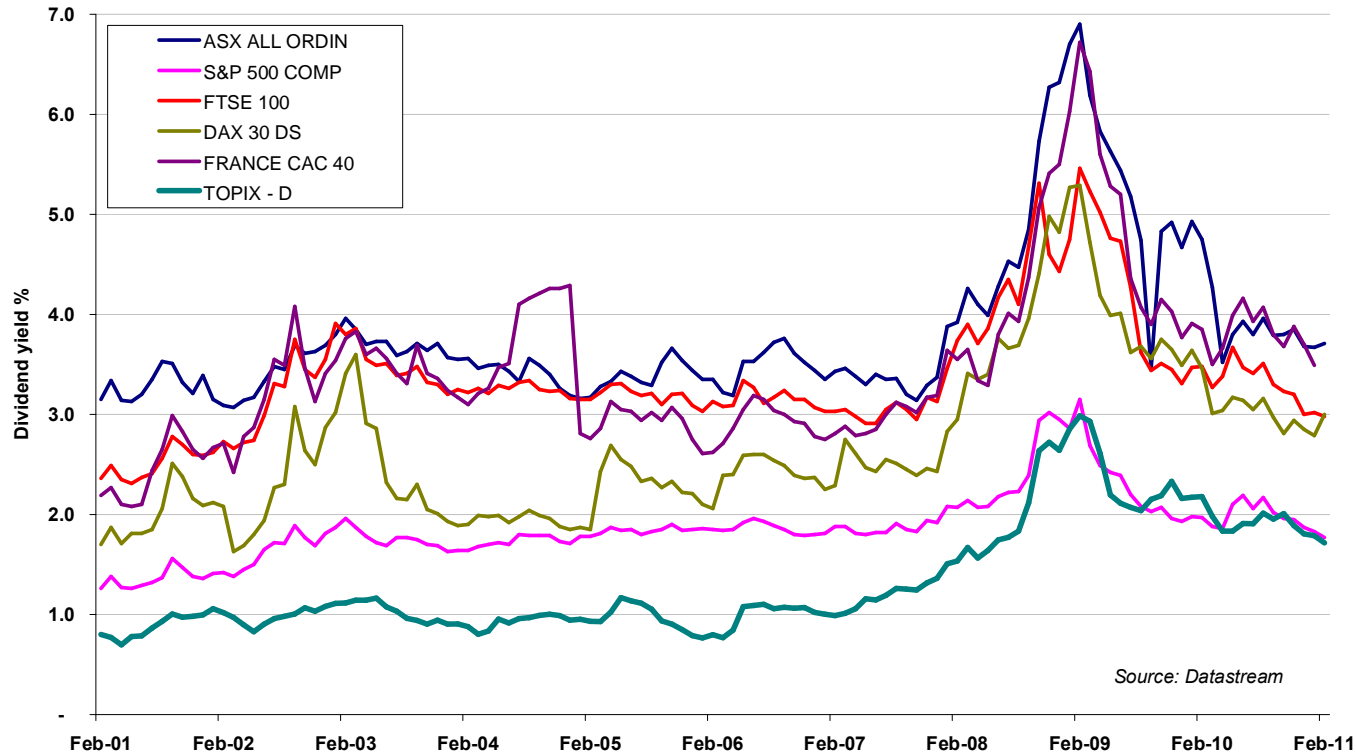
Price to earnings



Providing Strategic Financial Advice

Dividend yields

Dividend yields to February 2011



Providing Strategic Financial Advice

Disclaimer



The information, forecasts and opinions set out in this presentation have not been prepared for any recipient's specific investment objectives, financial situation or particular needs. Recipients should assess whether they are appropriate to their own peculiar circumstances before taking any action on the basis of this presentation. They can do this themselves or seek the help of an adviser. Information, forecasts and opinions can change without notice and Charter Financial Planning or Argentis do not guarantee the accuracy of the information at any particular time. Investment risks include currency, economic, political, market and other risks. Forecasts can be impacted by such risks. Past performance does not guarantee that future performance will be the same or even similar. Investment values can go down as well as up. Whilst all reasonable care has been taken in the preparation of this presentation, neither Charter Financial Planning nor any related bodies corporate is liable for any action taken by any person on the basis of anything said or contained in this presentation.

This document has been prepared by Argentis. Argentis Financial Services Pty Ltd, NCWP Pty Ltd and Northern City Financial Services Pty Ltd trading as Argentis are Corporate Authorised Representatives of Charter Financial Planning Limited. The Australian Securities and Investment Commission (ASIC) has granted Argentis Financial Services Pty Ltd, NCWP Pty Ltd and Northern City Financial Services Pty Ltd authority to provide financial services on behalf of Charter Financial Planning Limited. Argentis Financial Services Pty Ltd has been assigned an ASIC Representative Number of 326728, NCWP Pty Ltd has been assigned an ASIC Representative Number of 295779 and Northern City Financial Services Pty Ltd has been assigned an ASIC Representative Number of 252481. Charter Financial Planning Limited is an Australian Financial Services Licensee, Licence number 234665, ABN 35 002 976 294.



Providing Strategic Financial Advice

Asset class indices used in this report

- Australian shares: S&P/ASX 200 Accumulation Index. History before April 2000 was the All Ordinaries Accumulation Index
- International shares: MSCI World ex-Australia Accumulation (net dividends re-invested) Index in \$A
- Property: S&P/ASX 200 Property Accumulation Index. History before April 2000 is the ASX Property Trust Accumulation Index
- Australian fixed interest: UBS Warburg Australian Composite Bond Index
- International fixed interest: Salomon Brothers World Government Bond Hedged Index \$A
- Cash: UBS Warburg Australian Bank Bill Index
- International/regional indices: S&P 500 in \$US, S&P 500 in \$A, NASDAQ in \$US, NASDAQ in \$A, FTSE 100 Accumulation Index in GBP, FTSE 100 Accumulation Index in \$A, MSCI AC ASIA EX JAPAN Accumulation Index in Local Currency, MSCI AC ASIA EX JAPAN Accumulation Index in A\$, MSCI Emerging Markets Accumulation Index in Local Currency, MSCI Emerging Markets Accumulation Index in \$A, MSCI EUROPE Accumulation Index in Local Currency, MSCI EUROPE Accumulation Index in \$A, MSCI JAPAN Accumulation Index in Yen, MSCI JAPAN Accumulation Index in \$A, MSCI World ex Aust Accum Index in Local Currencies
- Interest rates: Australia RBA New Cash Rate Target ó Middle Rate, Japan Target Policy Rate Uncolltzed. Call - Middle Rate, UK Clearing Banks Base Rate ó Middle Rate, US Federal Funds Target Rate ó Middle Rate, Euro Short Term Repo (ECB) ó Middle Rate
- Credit/Fixed Interest: UBS AU Treasury 0-3 Years - RED. Yield, UBS AU Treasury 3-5 Years - RED. Yield, UBS AU Treasury 5-10 Years - RED. Yield, UBS AU Treasury 10+ Years - RED. Yield, Australia Interbank 3 Mth (LDN:BBA) ó Offered Rate, UK Interbank 3 Mth (LDN:BBA) - Offered Rate, US Interbank 3 Mth (LDN:BBA) - Offered Rate, UK Treasury Bill Tender 3M ó Middle Rate, US Treasury Bill 2nd Market 3 Month - Middle Rate, Barclays USD FRN AAA RTD (\$) - RED. Yield, Barclays USD FRN AA RTD (\$) - RED. Yield, Barclays USD FRN A RTD (\$) - RED. Yield, Barclays USD FRN BBB RTD (\$) - RED. Yield
- Dividend yield: ASX All Ordinary DS-Calculated ó Dividend Yield, S&P 500 Composite ó Dividend Yield, FTSE 100 ó Dividend Yield, TOPIX ó Dividend Yield, DAX 30 DS-Calculated ó Dividend Yield, France CAC 40 DS-Calculated ó Dividend Yield
- Price/Earnings: ASX All Ordinary DS-Calculated ó PER, S&P 500 Composite DS Calculated ó PER, FTSE 100 ó PER, DAX 30 DS-Calculated ó PER, France CAC 40 DS-Calculated - PER
- Commodities: Gold Bullion LBM U\$/Troy Ounce, OPEC Oil Basket Price U\$/Bbl, Wheat, Spring, 14%-Pro (Minn.) C/Bushel, Live Steers, USDA 5 Area Wtd. Avge., Soyabeans, No.1 Yellow C/Bushel
- Miscellaneous: Baltic Exchange Dry Index (BDI) ó Price Index, AU Unemployment Rate (Labour Force Survey Estimate) SADJ, AU Job Advertisements VOLA
- Source: Datastream

